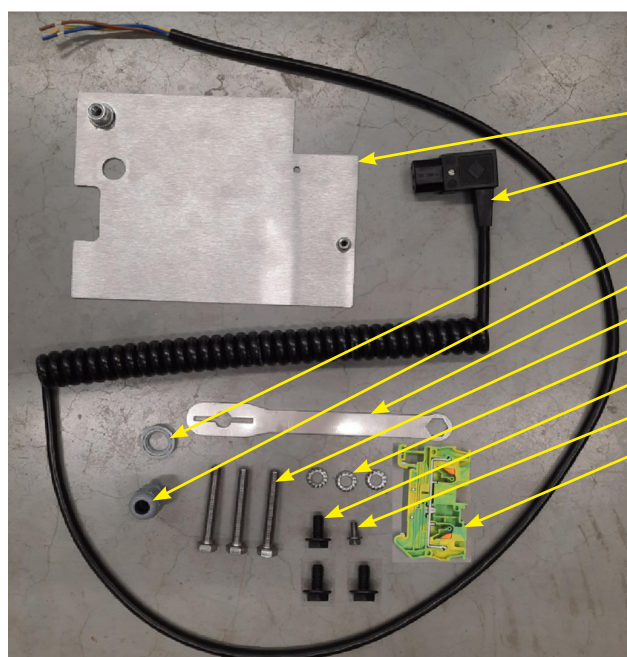


Doc. Nr.	Rev.	Registration form.
		Installation instruction
9124696	2	Grease Caddy



Parts in the kit:

- Grease Caddy housing
- Grease pan (1/1 GN tray)
- Handle with suction pipe
- Small parts bag
- Support for LDR
- Support for TDR



Small parts Bag:

- Adapter plate
- Cable
- Swivel nut
- Swivel
- Tool
- 3x M8x55 bold
- 3x Toothed spring washers
- 3x M8x20 bold
- 1x M5x10 bold
- 1x Terminal PE

Doc. Nr.	Rev.	Registration form.
		Installation instruction
9124696	2	Grease Caddy



Take the Grease Caddy housing and put it on the backside. (Use some cardboard to prevent damage)



Slide the handle with suction pipe in the two holes on top of the Grease Caddy housing as shown.



Fix the handle with 2x M8x20 bold.



Use tool from the kit if no other tools are available.

Doc. Nr.	Rev.	Registration form.
		Installation instruction
9124696	2	Grease Caddy



Put the Caddy on its casters and place the Grease pan as shown.

Grease Caddy is ready for use now.



Mount the Caddy support in the underframe with 2x M8x55 + Toothed spring washers and 1x M8x20 bolt.

Use the support that fits the Rotisserie model:
 -LDR is the big one
 -TDR is the smaller one

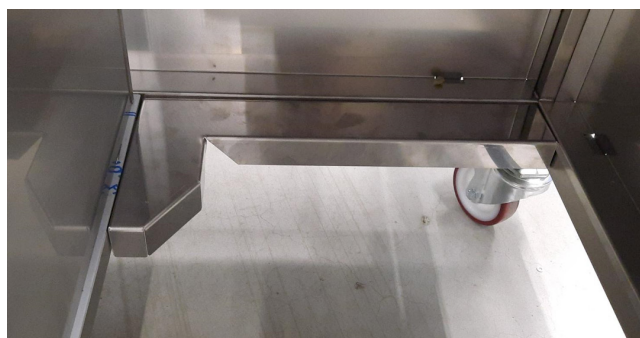


Use the yellow marked fixation points/holes in the under-frame.



Fixation holes might be covered with plastic caps. Remove the caps with a screwdriver.

Doc. Nr.	Rev.	Registration form.
		Installation instruction
9124696	2	Grease Caddy



Support mounted in correct position in the under-frame.

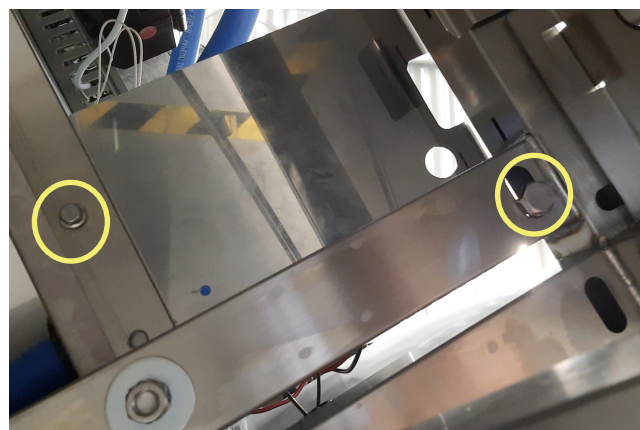


Important:
Disconnect the Rotisserie from the main power supply!

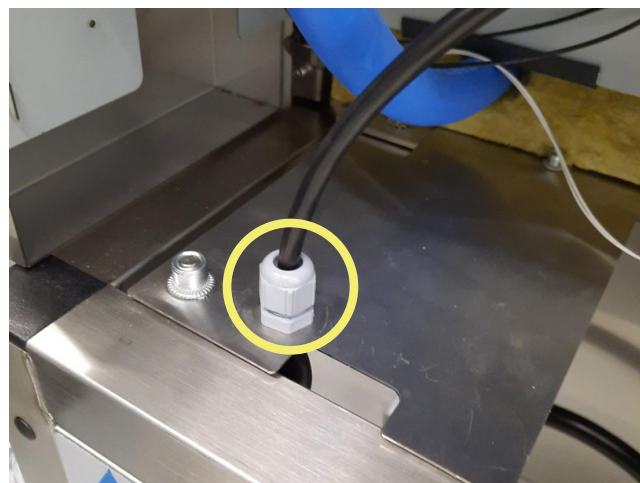
Remove right side cover to get access to the technical room.

Place the adapter plate on the stand like shown.

The holes in the plate should align with the holes in the Frame.



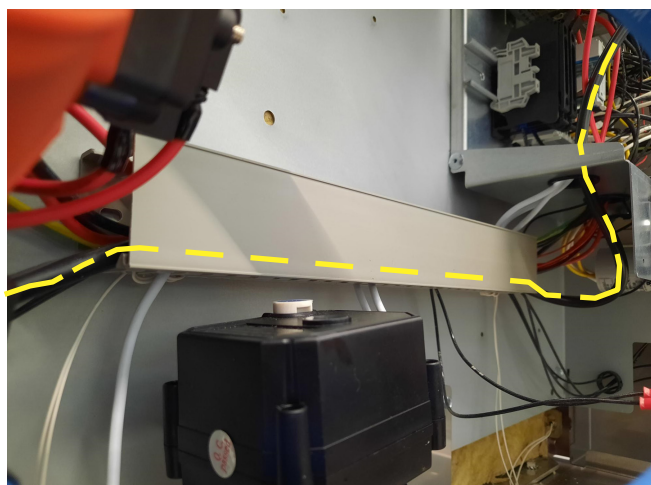
Fix the plate from below with 1x M8x55 + Toothed spring washer and 1x M5x20 bolt.



Mount the Swivel and Swivel nut like shown.

Lead the long straight end from the cable from underneath into the technical area.

Doc. Nr.	Rev.	Registration form.
		Installation instruction
9124696	2	Grease Caddy



Lead the cable from the swivel trough the cable tray to the connection terminals.



Connect the blue (-) Brown (+) to the 24V power-supply.

Place the PE terminal and connect the Yellow wire.

Tighten the swivel with pliers, the swivel acts like a strain relief.

Doc. Nr.	Rev.	Registration form.
		Installation instruction
9124696	2	Grease Caddy



Place the Grease Caddy in the Rotisserie under-frame.



Connect the cable to the Grease Caddy 24V-socket.

Make sure all wires are connected in a safe way and it is safe to connect the Rotisserie to the mains again. Place back the right side cover.

Reconnect the Rotisserie from the main power supply.

Bottom of the Grease pan should slowly get warm in approximately 10-20 minutes when empty.