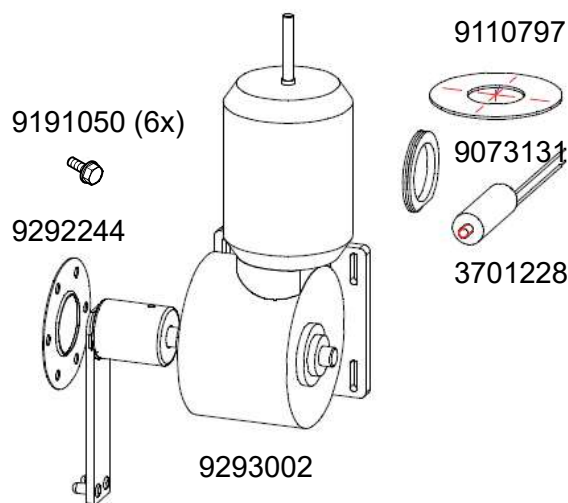


Doc. Nr.	Rev.	Registration form.
		Service instruction replacement
9123718	0	rotor drive motor TDR7/8



Contents service kit 9293002s for TDR7/8:

9293002	1x	Ass. rotor drive
3701228	1x	Capacitor 2,5 μ F
9292244	1x	Shaft seal 6 holes (from serial nr. 100075954)
9191050	6x	Hexagon screw M5x18 (from serial nr. 100075954)
9073131	1x	Seal ring, Teflon (untill serial nr. 100075953)
9110797	1x	Seal, silicon (untill serial nr. 100075953)
9123718	1x	This instruction



TDR7/8 p

The instruction is applicable for the following
Turbo Deli Rotisserie models:

- TDR7/8 m
- TDR7+7/8+8 m
- TDR7/8 p/i
- TDR7+7/8+8 p/i



**DISCONNECT THE UNIT FROM THE POWER SUPPLY BEFORE STARTING THIS
PROCEDURE!**

- NOTICE -

This manual is prepared for the use of trained Service Technicians and should not be used by those not properly qualified. If you have attended a training for this product, you may be qualified to perform all the procedures in this manual.

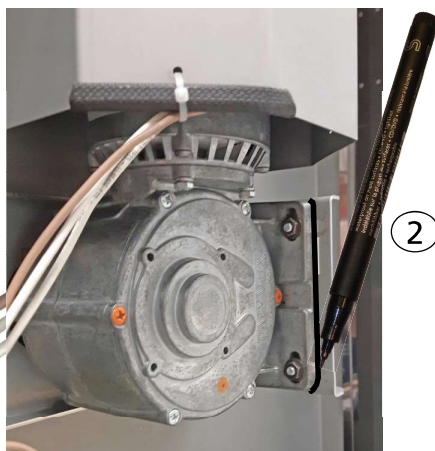
This manual is not intended to be all encompassing. If you have not attended a training for this product, you should read, in its entirety, the repair procedure you wish to perform to determine if you have the necessary tools, instruments and skills required to perform the procedure. Procedures for which you do not have the necessary tools, instruments and skills should be performed by a trained technician.

Reproduction or other use of this Manual, without the express written consent of Fri-Jado, is prohibited.

Doc. Nr.	Rev.	Registration form.
		Service instruction replacement
9123718	0	rotor drive motor TDR7/8



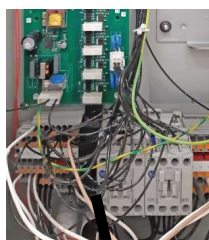
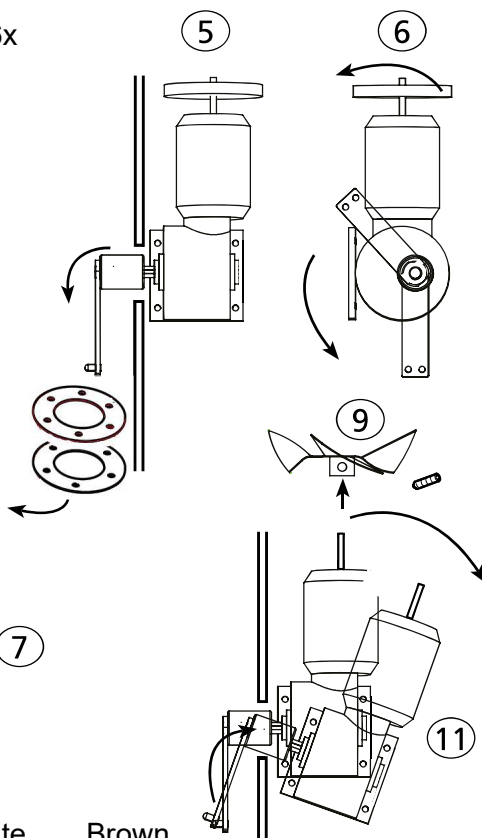
DISCONNECT THE UNIT FROM THE POWER SUPPLY BEFORE STARTING THIS PROCEDURE!



Dismounting the rotor motor:

Note, #4 and #5 are applicable from serial number 100075954.

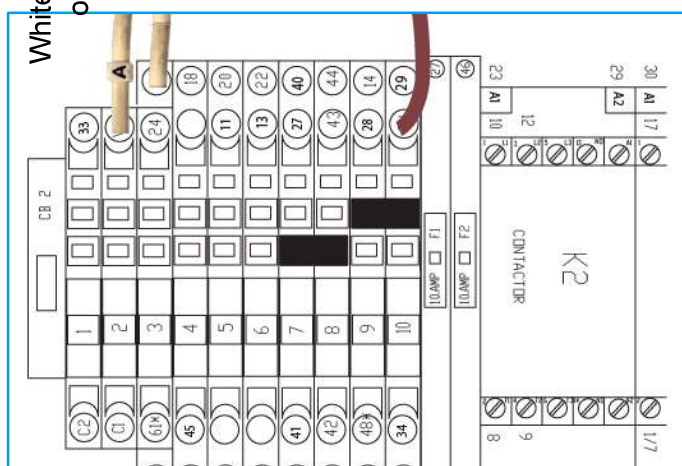
1. Remove the side panel at the operator panel side.
2. Mark the position of the motor on the bracket.
3. Take the rotor shaft out of the cooking cavity.
4. Unscrew the 6 screws from the shaft seal mounting plate.
5. Slide the mounting plate and lip-seal from the drive arm.
6. Put the drive arm (if applicable) in the position as shown. This can be done manually, if necessary, by turning the fan blade on the motor.
7. Disconnect the wiring of the motor.
8. Unscrew 4 screws and put the air guide aside.
9. Remove the (cooling) fan blade.
10. Unscrew the 4 mounting screws with nuts of the motor.
11. Take out the motor as shown.



White (A) /
or red

White

Brown



Note:

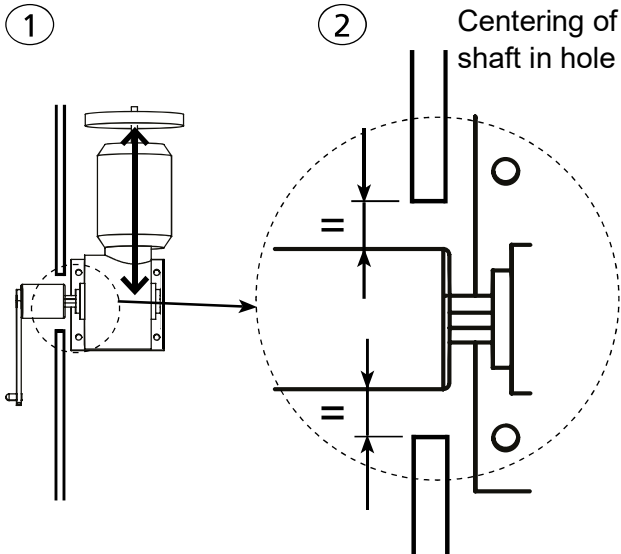
Image shows rotor motor drive head until serial number 100075953.

Use parts:

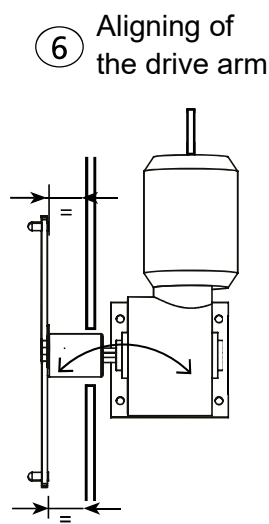
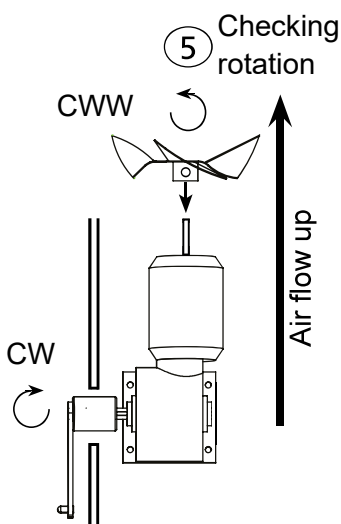
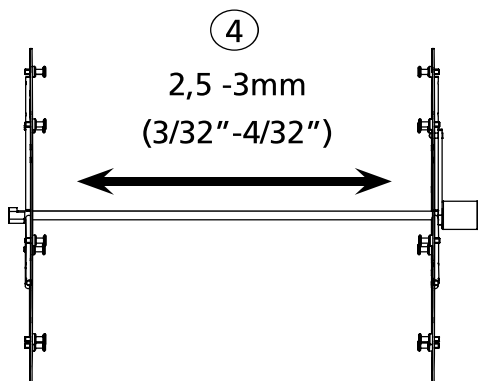
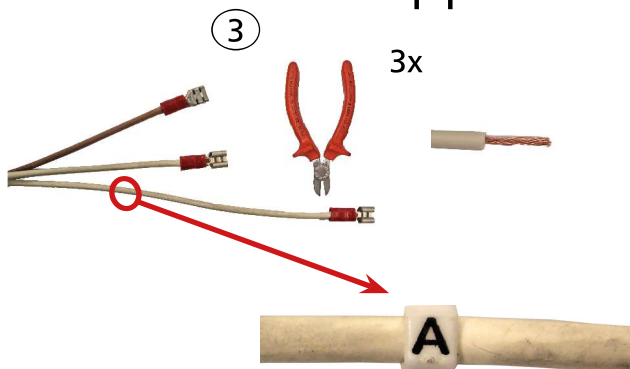
- Teflon seal ring (9073131)
- Silicon seal (9110797)



Doc. Nr.	Rev.	Registration form.
		Service instruction replacement
9123718	0	rotor drive motor TDR7/8



Centering of shaft in hole



Mounting the rotor motor

1. Mount the motor on the bracket using the previous made mark (see #2 from disassembling).
2. The motor shaft should come through the center of the hole!!
3. Connect the wiring of the (new) motor. See previous page for position of wires.

In case the wires have receptacles mounted, then these have to be cut off and the wires stripped. Note that the white wire, marked "A" is longer. On later models this wire is replaced by a red wire.

4. Hook in the rotor and check the axial play. This should be 2,5 -3mm (3/32\"/>
- 5. Put power on the unit and test the rotation of the rotor. Interchange the two white wires if wrong. The air flow should go up!
- 6. Check if the drive arm in top position has the same distance to the side wall as in bottom position.
- 7. Mount the shaft seal when the position of the motor is ok and the screws are mounted tight.

